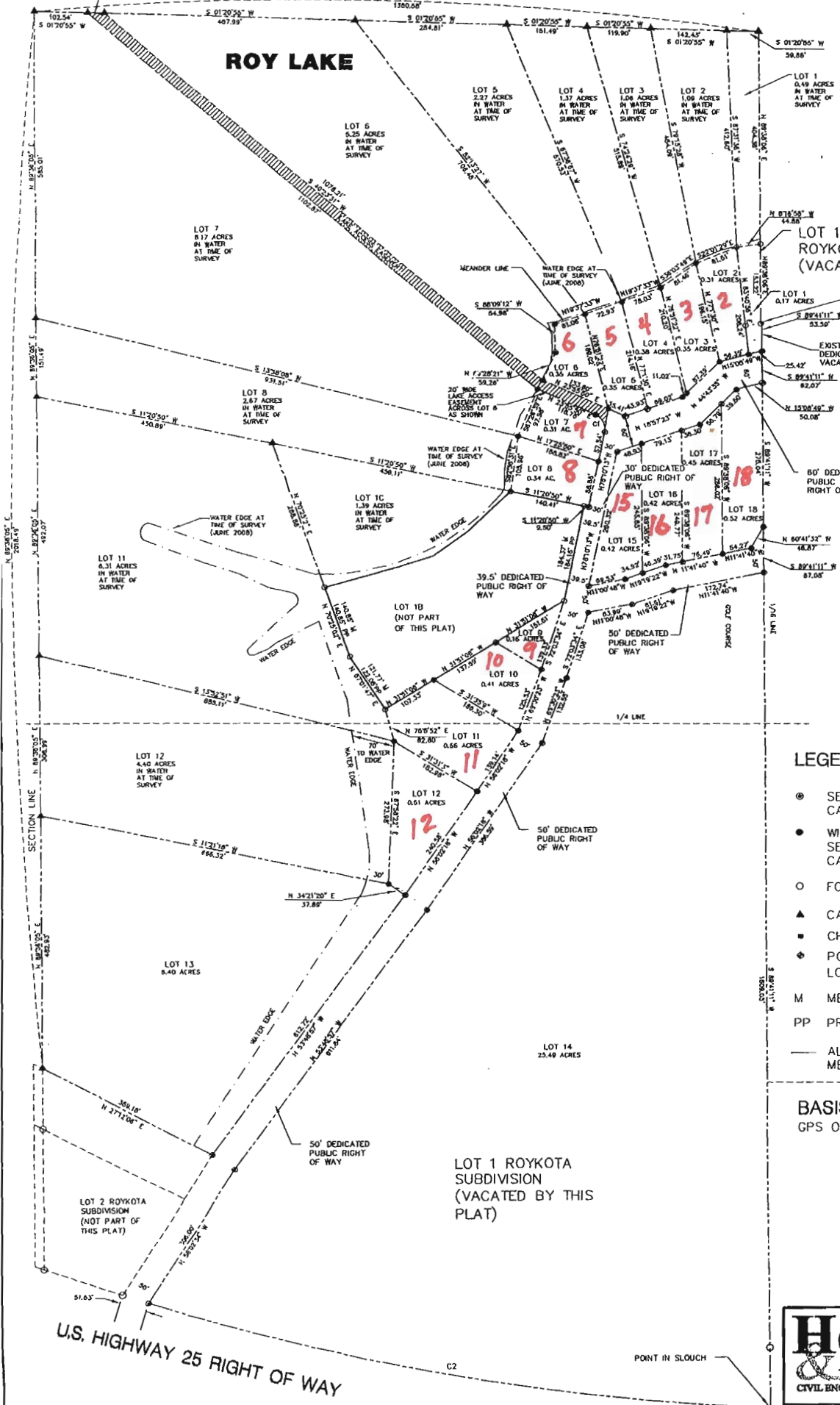
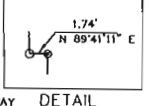


**PLAT OF  
ROYKOTA LEGACY ESTATES  
IN THE SE 1/4 SW1/4 AND GOVERNMENT LOT 5 OF SECTION 27-T126N-R55W OF THE 5th P.M.,  
MARSHALL COUNTY, SOUTH DAKOTA**

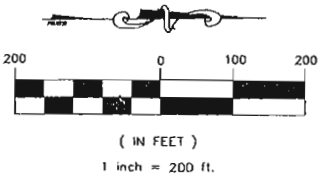


LOT 1A OF LOT 1 OF ROYKOTA SUBDIVISION (VACATED BY THIS PLAT)



CURVE TABLE

	Radius	Delta Angle	Length	Chord	Tangent
C1	30.00	77°53'57"	40.79	37.72	24.25'
C2	4550.00	14°35'37"	1185.68	1182.07'	596.05'



**LEGEND**

- ⊙ SET 5/8" X 18" REBAR WITH SURVEY CAP STAMPED KIESO RLS 9214
- WITNESS CORNER SET 5/8" X 18" REBAR WITH SURVEY CAP STAMPED KIESO RLS 9214
- FOUND PROPERTY CORNER
- ▲ CALCULATED POINT
- CHISELED X ON CONCRETE
- ◆ POINT NOT SET, BUILDING AT LOCATION
- M MEASURED IN FIELD
- PP PREVIOUSLY PLATTED
- ALL ACRES ARE CALCULATED TO MEANDER LINE

**BASIS OF BEARINGS**  
GPS OBSERVATION

SCOTT'S ADDITION (NOT PART OF THIS PLAT)

**Helms & Associates**  
CIVIL ENGINEERS & LAND SURVEYORS

221 Brown County Highway 19  
P.O. Box 111  
Aberdeen, S.D. 57401  
Phone: 605.225.1212  
Fax: 605.225.3189